

GCT Manager Software Quick Reference Guide V2.0

Getting started: GCT Manager interacts with the Clip Dock either via IR Link or by USB Disk. The software allows the user to retrieve test logs, SGC unit event logs, program configurations, and perform firmware upgrades. Below are detailed instructions for how to use the software:

Connecting via IR Link: Open GCT Manager and plug in the IR Link to your computer. Then power on your Clip Dock. Place the IR Link in front of Unit #1 (see picture)

Once it is placed correctly, make sure that the IR button is selected and click "Read". A successful connection will result in a green bar in the lower right hand corner.

Connecting via USB Disk: Remove the USB Disk from the Clip Dock (the USB Disk is located underneath the metal cover in the upper left hand corner).

To remove the cover, please use the allen wrench that was included with your shipment.

Place the USB Drive into your computer; make sure the USB Disk button is selected and click "Read". A successful connection will result in a green bar in the lower right hand corner.



Changing Settings:

Default Settings: Once you successfully communicate with the Clip Dock, you will see that the unit comes programmed with a number of default settings.

⚠ Unless necessary we do not advise changing the following fields:

- Number of Event Logs
- Maximum bump time
- Gas concentration (Gas Type and Concentration)



TTT Environmental & Safety

Instruments and Supplies

*The preferred source for instrument
Rentals, Sales, Service and Supplies!*

Anchorage
(907) 770-9041

Seattle
(253) 373-9041

Fairbanks
(907) 374-9040

www.tttenviro.com

info@tttenviro.com

Dock Settings:

Additional customization

Location: This field can be used to assign a unique name to the docking station. This will appear on the test log file. Ex: "Trailer 3 Docking Station"

Number Event Logs: By default the Clip Dock will retain 10 SGC event log outputs; changing this setting will allow for more event logs to be saved. *Note changing this field does not impact the number of events that are recorded by the SGC.

Auto Power-Off Time: After performing a test the unit will power off after 120 seconds, if you wish for the docking station to stay on longer, you can change this field.

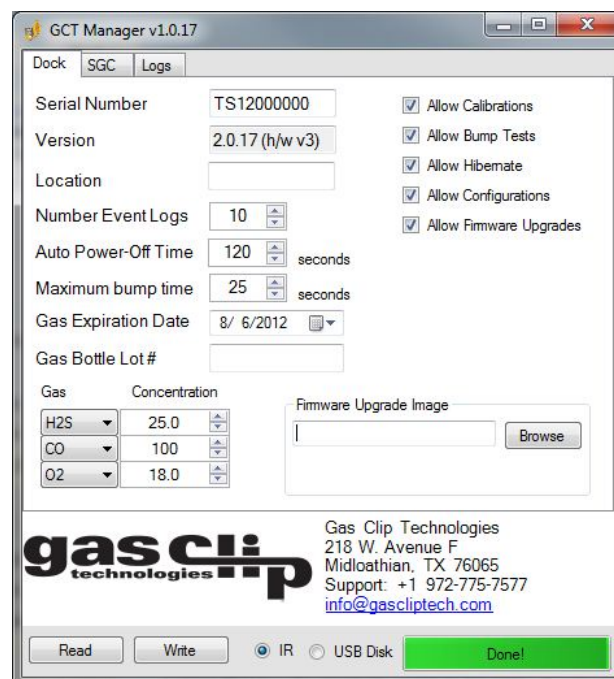
Gas Bottle Fields: Users can program in detailed information about their calibration gas. Expiration Date and Bottle Lot # will appear on each test record. If the expiration date is set to today's date, that field will remain blank on the test record.

Testing Check Boxes: These items are located in the upper right hand corner. *Note that changing any of these fields may disable key testing functions*

Firmware updates: The Clip Dock allows for firmware upgrades to occur during the lifetime of the unit. These may be product improvements to add additional features or to enhance monitor performance. Most firmware upgrades are not required unless notified by Gas Clip Technologies (GCT).

To see if your unit has the most current version please visit <http://www.gascliptech.com/resources.html> or contact GCT directly.

After you have made your requested changes click on the Write Device Button. If a successful write has occurred you will see a green bar at the bottom.



SGC Settings:

Users can program SGC configurations for each sensor type. Once this configuration has been programmed to the dock, every SGC detector that is bump tested will take on the new configuration values. In order to make changes to any particular field please update the value and ensure the check box on the left hand side is checked. Below is a description of the individual fields:

User ID: Each individual unit can now have a unique electronic user ID. You are able to program in up to 6 characters. Note: Some alphabetic characters do not display well.

Bump Interval: In order to help with bump test accountability users can adjust the Bump Interval. If a unit has not been bump tested within the time frame the unit will emit a flash until it has been tested either manually or via the Clip Dock Docking Station

Self Test Interval: By default all SGC and SGC Plus instruments have a default 20 hour self test. Frequency can be set anywhere from 8 to 20 hours.

High Alarm/Low Alarm Set Points: Adjust the high/low alarm set point. Note: When doing so make sure to set the alarm limit not to exceed the local or site guidelines. Some sites may have different set points than others.

Display:

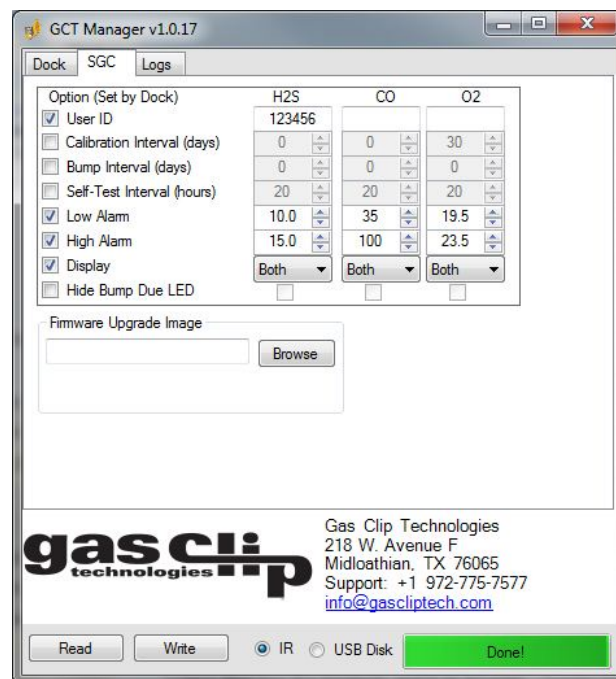
Both: This is the default setting for all GCT units. This option will display the life remaining when no gas is present. However when gas is present the unit will switch to display the sensor reading in real time ppm.

Sensor: This will turn the monitor into a real time ppm display monitor; by default always showing a real time ppm reading. No life remaining is displayed in this setting

Life: This setting will only display the life remaining on the display. When gas reaches alarm levels the unit will display the respective warning messages, however it will not display the specific concentration.

Hide bump due LED Flashing: If you prefer to not have the units flash when due for a bump test, please make sure to check this box.

After you have made your requested changes click on the Write Device Button. If a successful write has occurred you will see a green bar at the bottom.



SGC Settings Firmware upgrades: Both the SGC and SGC Plus units allow for firmware upgrades to occur during the lifetime of the unit. These may be product improvements to add additional features or to enhance monitor performance. Most firmware upgrades are not required unless notified by Gas Clip Technologies (GCT). To see if your unit has the most current version please visit <http://www.gascliptech.com/resources.html> or contact GCT directly.

Once new firmware has been programmed to the Clip Dock, units will be upgraded before testing. During the upgrade the LED lights will remain orange colored and flash. DO NOT move the unit during a firmware upgrade.

Logs Tab

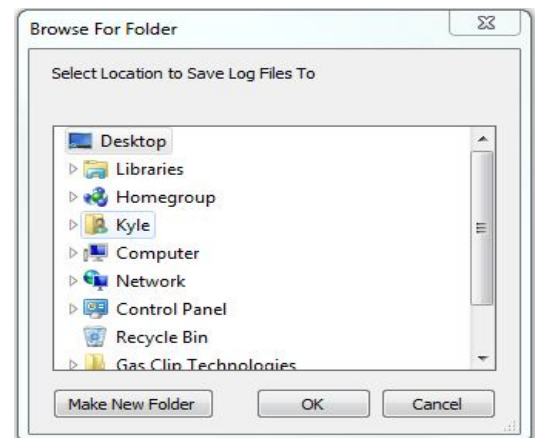
Test records as well as individual detector event logs can be accessed using the GCT Manager. Test records contain detailed dates and times for individual bump checks and calibrations. The test record is listed at the top of the page and starts with TS-SGC_Serial Number. Event logs are listed by serial number. The event log retrieved will be up to last 25 events. Past events can be located by accessing the USB drive, contact your GCT representative for more information.

How to download the test file:

Make sure to “Read” the IR or USB Drive. The Test file will automatically populate. Click the check box next to the test file and click “Read” again. A screen will prompt you to choose the location for where you want the file to be stored. By default these files are .csv and should be opened using Microsoft Excel.

This will be the default location for both test files and event logs. If you want to change this location, right click next to the “Files” field. From there select “Set Local Destination”.

How to download event logs: Make sure to “Read” the IR or USB Drive. All available units will be listed by serial numbers. To select the file(s) you want, click on the check box next to the desired units. Users can download multiple records at the same time. By default these files are .csv and should be opened using Microsoft Excel.



Inventory File: To allow users to keep better track of their units, GCT Manager can generate an inventory file. The inventory file is listed by serial number, unit ID, and gas type. Here are the steps to retrieve the inventory file:

Right click next to the “Files” tab, and then select Set Inventory Filename. A screen will prompt you to choose the location where you want to save the file and file name. Return back to the GCT Manager and click on the box next to TS-SGC _Serial Number, then click “Read” again. Then go to the specified location to find the inventory file.



FAQ's:

No memory stick error: Please check that the USB is inserted properly into the Clip Dock. Note that when performing a test, the Clip Dock itself will blink the power light if no USB is inserted.

No IR response received error: Please check to see that the docking station is powered on.